

The Grieverson Grant

British Chess Championships



The
70th Annual Championships
of the
British Chess Federation

KING GEORGE V COLLEGE
SCARISBRICK NEW ROAD, SOUTHPORT

by kind permission of the Headmaster D. J. Arnold, Esq. M.A.
and with the assistance of the Metropolitan Borough of Sefton

MONDAY 8 to SATURDAY 20 AUGUST, 1983
Programme £1

Grieveson, Grant & Co.

The Sponsors of the Congress

Grieveson, Grant of the Stock Exchange, London, are sponsoring the British Chess Federation's Annual Congress for the sixth consecutive year. The B.C.F. are grateful for the generous prize fund, and the benefits that have accrued to the Congress from a continuing relationship with Grieveson, Grant.

With some 650 partners and employees, Grieveson, Grant is one of the largest firms of stockbrokers in the U.K., and it provides a wide range of services to many different types of customers both in this country and abroad. Many of its members service the large institutions, such as pension funds and insurance companies; others manage the portfolios of private investors; the research department studies companies, industries, and the economy as a whole; the clients' orders must be executed by experienced dealers on the floor of The Stock Exchange itself; the corporate finance department brings legal and negotiating skills to advising companies on their stock market affairs; and the expansion and maintenance of the computer involves a major department of its own.

The firm has put increasing emphasis on several areas in recent years:

It runs eight unit trusts, of which three specialise in overseas markets (North America, the Pacific Area, and the Continent of Europe) and two in U.K. securities. The international department now covers all the major stock markets of the world, with offices in Boston and Tokyo. The Corporate Finance Department advises the large and growing number of companies to which Grieveson, Grant are brokers. The Fund Management department has continued to expand steadily. Its clients are mainly local authority and company pension funds and charities.

For further information on any of Grieveson, Grant's services please contact one of the firm's representatives at the Congress, or Graham Mann at the London office at 59 Gresham Street, London, EC2P 2DS (01-606-4433).

BRITISH CHESS FEDERATION

70th ANNUAL CONGRESS & CHAMPIONSHIPS

Sponsored by
GRIEVESON, GRANT AND CO.

**KING GEORGE V COLLEGE
SCARISBRICK NEW ROAD, SOUTHPORT**

8-20 AUGUST 1983

Opening Ceremony

Monday 8 August at 1.45 p.m. by
His Worship the Mayor
of the Metropolitan Borough of Sefton
Councillor Miss J. G. Kemp

Chairman

Peter Shaw, Esq.
President of the British Chess Federation

For Grieveson, Grant and Co.

John Brew, Esq.
Managing Partner

Congress Director

Stewart Reuben

Chief Arbiter

Harry Baines

Congress Secretary

Paul Buswell

Control Team

Richard Boxall
Neil Graham
Mary Kluth
Ron Powis

Peter Cartman
Glyn Jones
Geoff Lawrence
Peter Purland

Sophia Gorman
Mary Kerridge
Peter Morrish
Dave Welch



A Winning Combination from Pergamon

From the Opening into the Endgame

E MEDNIS, International Grandmaster

Grandmaster Edmar Mednis shows how to proceed in the minimum number of moves from the opening to favourable endgame situations, essentially by passing the middlegame.

176 pp Hardcover **£9.50** Flexicover **£5.95**

Comprehensive Chess Endings, Vol 1

Y AVERBAKH and **V CHECKOVER** Translated by **K P NEAT**

An encyclopaedic account of chess endings involving knight, king and pawns or bishop, king and pawns.

232 pp Hardcover **£12.50**

Play the Caro-Kann

E VARNUSZ

Edited by **M CHANDLER**, International Master

This book guides the reader through the myriad variations that are likely to be encountered on either side of a Caro-Kann.

175 pp Hardcover **£6.95**

125 Selected Games

V V SMYSLOV, International Grandmaster

Translated by **K P NEAT**

A collection of 125 games by the former World Champion, including a wealth of unusual openings, original middle game manoeuvres, and brilliant endgame play.

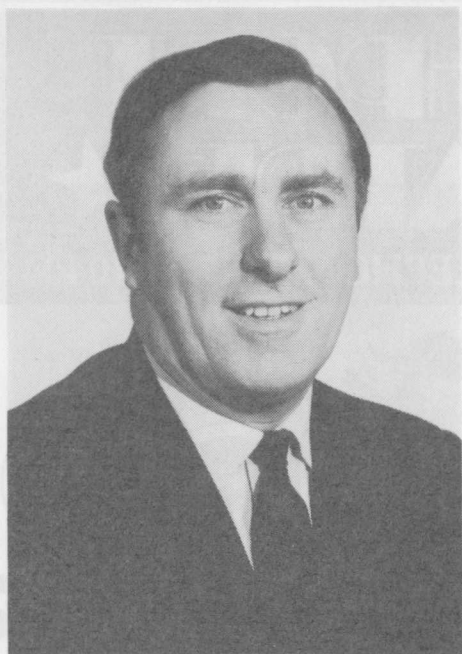
256 pp Hardcover **£9.95**

All prices are subject to change without notice



PERGAMON PRESS

Headington Hill Hall, Oxford OX3 0BW



A MESSAGE
from
**GRIEVESON, GRANT
& CO.**

This is the sixth year of our Sponsorship of the British Championship and we are most gratified to see how it has progressed since 1978 when we first gave our support. We hope that some of the quite evident improvement in British Chess in the last few years can be attributed to the help that we and other sponsors have given.

You have our best wishes for a successful Congress

JOHN BREW
Managing Partner

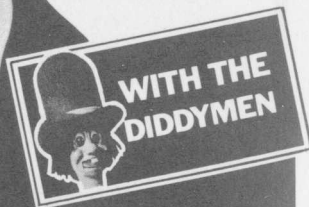
SOUTHPORT ★ THEATRE ★

THE PROMENADE, TELEPHONE: 0704 40404

THE KEN DODD LAUGHTER SHOW

**A FAMILY
SHOW
FOR ALL AGES!!**

TICKET PRICES
£3.00 : £2.50
OAP'S, CHILDREN
£2.25 : £1.75
GENEROUS
PARTY CONCESSIONS



**STARTS MID JULY FOR A SEASON
TWICE NIGHTLY 6.00PM & 8.45PM BOOK NOW!**

METROPOLITAN BOROUGH OF SEFTON

THE MAYOR'S OFFICE

Town Hall, Bootle, Merseyside, L20 7AE



MESSAGE

from

HIS WORSHIP THE MAYOR

(Councillor Miss J. G. Kemp)

I am pleased to be able to welcome the competitors taking part in the 1983 Grieveson, Grant British Chess Championships, which are to be held in Southport in August. I sincerely hope that all attending the Championships will have a happy and enjoyable time.

I am looking forward to attending the Opening Ceremony and meeting the competitors, many of whom, I hope, will take the opportunity to enjoy the town's attractions, which are many and varied.

I am sure the Championships will bring out the very best in British chess and I wish all those taking part a good, fair contest.

MAYOR OF SEFTON



BRITISH CHESS FEDERATION

are the organisers of the annual BCF Congress, held in most years since 1904.

We are also responsible for the Counties Championships, National, National Major and National Minor Club Championships, Times British Schools Tournament, National Grading List, Adjudication Service, Certificate of Merit Scheme, Coaches' courses, Arbiters' exams, NewsFlash, Year Book of Chess, Training Schemes for young players, all aspects of international chess and co-ordination of all national chess activity.

In 1983-84 we have at least three major international events, including again the highly successful Phillips & Drew GLC Kings starting immediately after Easter. Watch the NewsFlash for details.

BCF MEMBERSHIP £1.60 Registration via your Club
 £6.00 Associate Member
 £10.00 Full Member
 £20.00 Vice-President (available also to clubs)

BCF PUBLICATIONS £2.50 Year Book 1983-84
 £4.50 Newsflash Monthly
 £2.00 Laws of Chess
 80p Set of 14 leaflets 'Tactics for Juniors'

Leaflets giving details of our activities are on display and we will be pleased to deal with any more specific enquiries that you might have.

BRITISH CHESS FEDERATION
9a GRAND PARADE, ST. LEONARDS-ON-SEA, EAST SUSSEX TN38 0DD
TELEPHONE 0424-442500 (24 hours)



A MESSAGE

from

THE PRESIDENT OF THE BRITISH CHESS FEDERATION

For the third time the annual Congress is being held in Southport, an outcome for which we must thank the Metropolitan Borough of Sefton (and the 100 year old Southport Chess Club). The previous occasions were our second Congress in 1905 and the twenty-first in 1924.

Both the previous Southport British Championships were won by the legendary H. E. Atkins, the earlier one being the first of his unequalled run of seven straight wins and the latter marking his return to the fray to score two more in succession, making nine in all. A favourable omen for this year's winner?

Whoever wins will, along with several other prizewinners, benefit from the generous sponsorship of Grieveson, Grant, as also will the Congress generally. We look forward to seeing John Brew and his colleagues, as always, taking a keen interest in activities at the Congress. This is, at the time of writing, heading towards becoming one of the most popular in our history.

PETER SHAW

A MESSAGE FROM THE CONGRESS DIRECTOR

This is the 70th Congress and the whole event is always redolent of history. Thus it is particularly apposite that we are able to help Southport Chess Club celebrate their Centenary.

It is pleasing to note that entry in each junior championship has increased since last year. This can come as no surprise. We know this part of the world has a magnificent record for encouraging junior chess. The BCF Management Board showed its recognition of this by awarding John Beach one of the inaugural President's Awards for Services to Chess. He was the first person to organise the great Liverpool Junior Congress.

The Metropolitan Borough of Sefton is being particularly welcoming. We are all invited as their guests to the theatre Saturday evening for The Ken Dodd Laughter Show. The Southport Flower Show will take place towards the end of the second week.

With all this, the many evening events and the opportunity to spectate at the congress on a rainy day, I am surprised more people do not choose to have their summer holiday coincide with the British Chess Championships — even if they don't fancy serious chess. Ultimately though, the play's the thing and the Control Team is proud of their heritage of organising the congress with more competitive chess than any other in Europe.

STEWART REUBEN

THE 1984 GRIEVESON, GRANT BRITISH CHAMPIONSHIPS

Will be held in **Brighton** from 30 July to 11 August
at the Brighton Centre.

For all information on accommodation in Brighton
contact:

**Brighton Borough Council,
Resort Services Dept.,
Marlborough House,
Old Steine,
Brighton BN1 1EQ.**

Telephone Brighton (0273) 29801

A MESSAGE FROM THE PRESIDENT OF THE SOUTHPORT CHESS CLUB

On behalf of the Southport Chess Club, I would like to extend a most cordial welcome to all who are taking part in the 70th Annual Championships of the British Chess Federation.

I feel that it is particularly fitting that we should act as hosts for the Grieson, Grant British Chess Championships in 1983 as this year marks the centenary of the Southport Chess Club.

You will find Southport a pleasant town with tree lined streets and elegant shops, with parks and gardens attractively laid out and a Marine Lake with 96 acres of water which is a Mecca for sailing enthusiasts. The Southport Flower Show is world famous and other special events include a music festival, county cricket and lawn tennis. The town can also boast of six golf courses — the Ryder Cup and many other competitions often being held here.

I am sure you will find much that is interesting and enjoyable during your stay in our town. My very best wishes for a fortnight's fascinating chess.

R. W. BURGESS

CHESS IN MERSEYSIDE

For information about local Clubs, tournaments
competitions, congresses, etc., contact the Secretary
of the

MERSEYSIDE CHESS ASSOCIATION

Mr. D. F. Pearcy, 29 Crocketts Walk, Eccleston,
St. Helens WA10 5DX. Tel: St. Helens (0744) 24564

THE SOUTHPORT CHESS CLUB

meets on Monday evenings at the Talbot
Hall, Sussex Road.

PLAYING SCHEDULE

Opening Ceremony†	1.45 p.m. Monday 8 August
Prizegiving§	9.30 a.m. Saturday 20 August
British Championship	} Daily,* Monday 8 to Friday 19 August, 1.45 to 6.45 p.m.
British Under-21 Championship	
Major Open Tournament	
British Ladies' Championship	Daily, Saturday 13 to Friday 19 August. 1.45 to 6.45 p.m.
British Veterans' Championship	Daily, * Monday 8 to Friday 19 August, 1.45 to 5.45 p.m.
British Under-18 Championship	} Daily,* Monday 8 to Friday 19 August, 9 a.m. to 1 p.m.
British Under-16 Championship	
British Under-14 Championship	
Blackburne/Staunton/Soanes Tournaments	
British Under-11 Championship	Daily, Monday 8 to Friday 12 August, 9 a.m. to 1 p.m. AND ALSO Tuesday 9, Wednesday 10, Thursday 11, 2.30 to 6.30 p.m.
5-Day Tournaments (morning/afternoon)	Daily, Monday 8 to Friday 12 August, OR daily Monday 15 to Friday 19 August. Choice of either morning play 9 a.m. to 1 p.m. OR afternoon play 1.45 to 5.45 p.m.
Grieveson, Grant Open Quick-Play	Sunday 14 August 10 a.m. to 7 p.m. 7 rounds all moves in ½ hour.

*No play Sunday 14 August.

†The afternoon session will begin immediately after the Opening Ceremony.

§The prizegiving for first week events will be on the evening of Friday 12 August.

ADJOURNMENTS

(Quick-Play events excepted)

There are no adjudications or sudden-death finishes ('Quick-Play' excepted). Adjourned games are played off as soon as possible. Subject to the direction of the Chief Arbiter adjournment sessions will be 2.30 p.m. to 6.30 p.m., 8.30 p.m. to 10.30 p.m., 9.30 a.m. to 11.30 a.m. On Thursday 18 and Friday 19 August the evening adjournment session will be played to a finish.

RATE OF PLAY

40 moves in 2½ hours, then 16 moves per hour: British Championship, British Ladies' Championship, British Under-21 Championship, Major Open Tournament.

40 moves in 2 hours, then 20 moves per hour: British Veterans' Championship, British Under-18/16/14 Championships, Blackburne/Staunton/Soanes Tournaments, 5-Day Tournaments.

45 moves in 2 hours, then 25 moves per hour: British Under-11 Championship.

All moves in ½ hour per player: Grieveson, Grant Open Quick-Play.

All moves in 10 minutes per player: Speed Chess Tournaments.

PRIZEGIVING

The Prizegiving and Closing Ceremony will take place at 9.30 a.m. on Saturday 20 August.

The President of the Northern Counties Chess Union, Peter Cartman, will be in the Chair.

John Brew Esq., will represent Grieveson, Grant and Co. His Worship the Mayor, Councillor Miss J. G. Kemp, will represent the Metropolitan Borough of Sefton.

There will be a prizegiving for first week tournaments on the evening of Friday 12 August at 8 p.m.

All prizewinners should attend the prizegiving; not to do so is inconsiderate to sponsors and organisers.

PRIZES

British Championship	£1250 + Sims Prize* £900 £700 £600 £500 £400 £350 £300 £250 £200 £180 £160 £140 £120 £100 plus special junior prizes.
British Ladies' Championship	£150 + Lander Prize* £100 £60 £40.
British Veterans' Championship	£60 £40 £20 £10.
British Under-21 Championship	£100 £75 £50 £25.
British Under-18 Championship	£75 £40 £30 £20.
British Under-16 Championship	£75 £40 £30 £20.
British Under-14 Championship	£75 £40 £30 £20.
British Under-11 Championship	£50 £30 £20 £10.
British Girls' Championships	£20 plus any other prize won.
Major Open	£200 £150 £100 £60 £40.
Blackburne Tournament	£100 £60 £50 £40.
Staunton/Soanes Tournaments	£50 £40 £30.
5-Day Tournaments	Prizes will be announced.
Grieveson, Grant Open Quick-Play	£100, others according to entries.

*The Sims and Lander Prizes will be approximately £200 and £60 respectively.

Grieveson, Grant Special Prizes: Two, each of £25. One for the highest score achieved in any of the Junior Championships. The other for the highest score achieved in any other 11-round tournament.

COMMONWEALTH WOMEN'S CHAMPION

By consent of the Commonwealth Chess Association this title will be awarded to the woman player placed highest in the British Championship.

MAIL AND TELEPHONE

The address for competitors' mail is:

c/o Chess Championships
King George V College
Scarlsbrick New Road
SOUTHPORT
Merseyside PR8 6LR

The Congress Office telephone is Southport (0704) 38850. This should be used for **urgent messages only**.

CONDUCT OF PLAYERS

Stewart Reuben and his team seek to maintain the highest standards at the British Championships. It would help the smooth running of the events if players could bear the following points in mind.

REPORTING OF RESULTS

Both players **must** hand in the top copy of their scoresheet **promptly** after the game. This speeds up the next round draw, assists the media, and stops the Control Team wondering if they've lost a result.

DISCUSSION OF GAMES

Players **must not** discuss their game while they are playing. Nor should you ask another player about his/her game, as your reaction to their reply might be construed as comment or advice. If someone asks you how your own game is going you should decline to answer. While you are playing please do not visit the Bookstall or analyse or play through someone else's game.

ADJOURNMENTS

Players not used to playing adjournment sessions should note that:

An illegal, illegible, or ambiguous sealed move can, at the Chief Arbiter's discretion, cost you the game, and it is your responsibility entirely to seal a valid move.

The clock should not be stopped until the scoresheets are in the envelope sealed, and the clock should only be stopped by the player sealing. If your opponent is sealing, please assist him/her by quietly completing the envelope and putting your own scoresheet into it.

You can only seal before the end of the session if you take the unused time on to your clock and if the controller consents to early sealing. Also you must have satisfied all relevant time controls.

You will lose by default if you are more than one hour late for an adjournment session even if you had more than an hour left on your clock.

DEFAULTS AND WITHDRAWALS

Players who default or withdraw without good reason will be refused entry to future Congresses. If you are obliged to withdraw, please tell the Chief Arbiter promptly.

FOOTWEAR

It would help to minimise noise if players and spectators wore soft-soled shoes.

FIVE-MINUTE CHESS

Playing speed chess with tournament clocks is forbidden. Indeed, no 'friendly' games in the tournament areas during play are permitted.

Clocks may be hired for playing speed chess in the analysis rooms. There is a £5 deposit and a charge of 50p per day. Please enquire at the Sales Office.

APPEALS

Appeals may be made against a controller's decision on matters of the laws of chess or of administration. Appeals should be made to the Chief Arbiter; Harry Baines. If a player is dissatisfied by the Chief Arbiter's decision s/he may appeal to the Appeals Committee.

An appeal to the Appeals Committee must be lodged with the Congress Director **in writing** within one hour of the Chief Arbiter's decision, accompanied by a £2 deposit, returnable if the appeal is successful.

The Appeals Committee will be:

Stewart Reuben, Congress Director, in the Chair.

Two BCF Arbiters not involved in the original dispute.

Two players' representatives to be appointed (nominations welcome).

BCF RULES FOR QUICKPLAY EVENTS

1. Quickplay is defined as a game of chess where each player has one hour or less to complete all his moves.
2. The clock will be placed, except in special circumstances, at the left hand of the player with the white pieces.
3. Before play, the players must inspect the position of the pieces and the setting of the clock. An error cannot normally be corrected after each player has made his first move.
4. The same hand must be used to press the clock as to move the pieces.
5. Any player using undue force, may, after a warning, be penalised by the loss of the game. Nor may the clock be picked up by either player.
6. All rules of chess apply, except where specifically amended by these rules.
7. For one hour games only, players must keep a game score up-to-date until less than 5 minutes remain on their clock.
8. For any query necessitating the presence of the controller, the clocks may be stopped.
9. To win a game on time, a player must **claim** such a win and also have **mating material**.
10. If both flags are down, the game is drawn.
11. Illegal moves only lose when one or both of the players has less than 10 minutes remaining on his clock. Thus they always lose in 10 minute chess. An illegal move is not completed until the clock has been pressed and carries no special penalty until then.
12. Illegal moves, discovered only after they have been replied to, cannot be corrected unless both players mutually agree otherwise without recourse to the arbiter.
13. Normally the controller will in no way interfere in the game. A player too short of time to keep score may employ a controller to verify repetition or the 50/100 move rule. This means he would have to view all future moves.
14. Any appeal against a decision by the controller must be made immediately and accompanied by a deposit of £2. The appeal will then be referred to an independent 3-man committee whose decision is final. If the appeal is successful, the deposit will be refunded.

TIE BREAKING AND PLAY-OFFS

APPLICABILITY OF TIE-BREAK

Tournaments other than British Championship and British Ladies' Championship

In the event of a tie for any title, the title will be SHARED.

In the event of a tie for any prize monies such prizes will be shared equally.

British Championship and British Ladies' Championship

In the event of a tie for either title a play-off will be arranged. Should the play-off be tied, it will be resolved by one-hour games.

Prize monies for shared places in either Championship will be shared, except that in the event of any play-off prize-monies for those placings will be carried forward to the play-off and divided according to the play-off results.

British Under-21 Championship and Major Open Tournament

In the event of a tie for the free places in the 1984 Grieverson, Grant British Championship at Brighton the following will be used to break the ties: Sum of Progressive Scores. If this fails to break the tie then Sum of Opponents' Scores, except that the scores of the lowest-scoring and of the highest-scoring opponent will be disregarded.

NOTICE OF PAIRINGS

Every attempt will be made to post the draw for each round as follows:

British Championship	Not later than 11 a.m.
Other afternoon events	Not later than 1 p.m.
Morning events	Not later than 10.30 p.m.

The controllers will do their best to post the draw earlier, but cannot answer any enquiries.

Games unfinished when the work on pairings commences will be provisionally 'adjudicated' for that purpose.

RECORDED INFORMATION

British Championship results will be available from the Congress recorded information service. This service will be available between 10.30 p.m. and 9 a.m.

Pairings in the British Championship ONLY will be recorded on this service from 11.30 a.m. to 1.45 p.m. each day. This is for the benefit of Championship players and others are asked to keep the line clear.

The telephone number for this information will be Southport 38037, which is for this service **only**.

It is difficult to be perfect in this and we apologise in advance for failings.

PROMOTIONS AND EXEMPTIONS

FOR TIE-BREAKING PROCEDURES SEE SEPARATE NOTICE

CHAMPIONSHIP

Anyone scoring $7\frac{1}{2}$ or more will be exempted to the 1984 British Championship.

JUNIOR (UNDER-21) CHAMPIONSHIP

The British Under-21 Champion will be exempted to the 1984 British Championship.

MAJOR OPEN TOURNAMENT

The three highest-placed eligible players will be exempted to the 1984 British Championship.

SWISS PAIRINGS

The BCF Seeded Swiss Pairing System will be used in the Grieveson, Grant British Championship, the Major Open and Quick Play Tournaments. These are not exactly as published in the 1982-3 BCF Yearbook as they are being modified in the light of experience. Details of the rules can be obtained from the Congress Office. Their basic aim is to achieve seeding top half v second half in grading order on every score group for every round.

The BCF Lottery system will be used in other tournaments apart from possibly the 5-day events.

COUNTDOWN CHESS CLOCKS

'Countdown' clocks will probably be used throughout the British Championship.

OFFICE EQUIPMENT

The British Chess Federation gratefully acknowledges the assistance of K. H. Vickers (Copying Consultants) Ltd., and of Jones + Brother, Office Equipment Division, in providing photocopiers and typewriters for use in the Grieveson, Grant British Championships.

COMMENTARY

Daily commentaries on games in progress in the British Championship will be conducted by Bernard Cafferty in the first week and by Graham Lee in the second. There will be discussion, analysis and — most particularly — audience participation at these sessions. They will be held in the Common Room block each day at 2 p.m. — admission free.

BRITISH CHAMPIONSHIP BULLETINS

Peter Griffiths will be providing the customary Congress service of daily Bulletins giving the scores of all games in the British Championship. (In algebraic notation.)

Charges for this service:

£3.00 posted complete after the Championship.

£3.00 collected daily at the Congress.

£4.44 posted daily, first-class mail.

Orders should be placed with Peter Griffiths in his office, not at the Congress Office.

SCORESHEET PHOTOCOPYING SERVICE

Want to check a prospective opponent's previous games? Anxious to play through the game you glanced at that looked interesting? Photocopies of earlier rounds game scores can be ordered from the sales office.

The price per game is 5p. Orders can **only** be fulfilled at the times advertised.

CAR PARKING

There is adequate car parking at the College.

THE BRITISH CHAMPIONSHIP

How to qualify for 1984

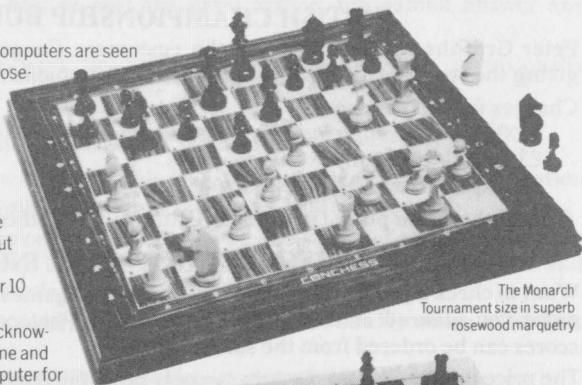
All players must be citizens of the U.K. or of a Commonwealth country; or have been domiciled in the U.K. for the past 5 years. If this applies, any of the following is a means of qualifying:

- (a) British Champion in any of the past 5 years;
- (b) A score of $7\frac{1}{2}/11$ or better in the previous year's Championship;
- (c) The reigning British Under-21 Champion;
- (d) Finishing in the top three of the previous year's Major Open;
- (e) An active rating of 220 (2360) or higher in a current British Isles national grading list, *or* the BCF interim list, *or* the FIDE list of 1 January 1984, *or* of 1 July 1984;
- (f) Women players graded 200 (2200) or higher. If this provides less than 3 contestants, the number can be made up down to grade 190 (2120).
- (g) The Champion, or nominee, of each of the English Chess Unions;
- (h) The 3 highest placed players, not already qualified, in the 1983 Leigh Grand Prix;
- (i) The highest placed player, not already qualified, in each of the 1983 Lloyds Bank Masters, Benedictine International and 1984 Arc Young Masters;
- (j) Champions of Commonwealth countries of playing strength 200 (2200) or higher;
- (k) The two highest placed competitors in regional weekend Swisses being organised by each union;
- (l) A nominee of the Scottish Chess Association, Welsh Chess Union or Ulster Chess Union;
- (m) A nominee of the BCF's Junior Selection Committee.

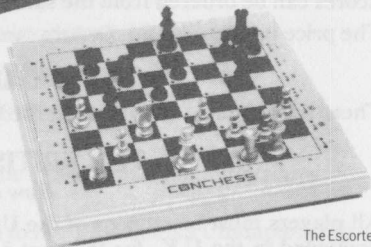
Conchess—all you ever dreamed of from a chess computer... and more!

Wherever CONCHESS sensory chess computers are seen or played, their superb appearance in rosewood or mahogany marquetry and superior level of play are immediately recognised. With ten levels of play available at the touch of a button to match the standard of beginner through to above average club player (BCF 140-155), CONCHESS is easily the most suitable partner for ninety nine out of every hundred players. In a recent congress CONCHESS was rated at over 10 BCF points ahead of its leading rivals.

International Master Julian Hodgson acknowledges that it sharpens up even his game and also rates CONCHESS as the best computer for learners that he has seen. CONCHESS is so easy to use that you are only aware of the quality of the game and the skill of your opponent. There are no keyboards, screens, pegs or squares to push down, you simply pick up a piece and move it – the computer precisely indicates the move it wishes to make. CONCHESS is always ready to meet your challenge, analyse a problem or an adjourned position, or even play back a whole game move by move.



The Monarch
Tournament size in superb
rosewood marquetry



The Escorter
Avant-garde silver and black design



The Ambassador
Elegant design in finest inlaid mahogany

There is simply not sufficient space here to tell you about all the superb features that make CONCHESS the supreme 'state of the art' chess computer and the only one that has both the chess program and the computer contained in one fully upgradable cartridge – so that you will still have the same superb board in the 1990's!

Call at our showrooms for a demonstration (Mon.-Fri. 9.30am-5.30pm).
or send for free information, reviews and list of stockists.

CONCHESS

Contemporary Chess Computers, 2-3 Noble Corner, Great West Road, Hounslow, Middlesex TW5 0PA
Please send this coupon or telephone 01-577 1700 for full details of CONCHESS Sensory Chess Computers.

Name _____

Address _____

Post Code _____

CTP

SPECIAL EVENTS

MEET THE TEAM

The Championships Control Team will be pleased to meet you convivially at the Royal Clifton Hotel, Promenade, on Sunday 7 August from 8 p.m.

The pairings for the morning and afternoon round 1 events will be on display.

Drinks will be available at your own expense.

CHESS IN THE SUN

SIMULTANEOUS DISPLAY

International Master Nigel Davies will play against all comers in Princes Park on Sunday 7 August from 2 p.m. There will be no charge, but preference will be given to casual players rather than congress entrants.

EVENING ATTRACTIONS: 8 P.M.

- Tuesday 9** Speed chess, all your moves in ten minutes. Entry fee 50p.
- Wednesday 10** Any Questions. A panel of celebrities will answer all your questions, from 'How can I become a Grandmaster?' to 'why the BCF?'
- Thursday 11** Simultaneous display by a leading player. Fee £1, under-18s 50p.
- Friday 12** Speed Chess.
- Monday 15** Talk by a leading player.
- Tuesday 16** Crazy Lightning chess. Entry fee 49½p.
- Wednesday 17** Simultaneous display.
- Thursday 18** Speed chess.

Players who have won their last two games in their tournament are entitled to free entry to the evening event immediately following.

It is hoped to show the recent Canadian film "The Great Chess Movie" during the first week.

EVENING SPECIALS

'Evening Special' tournaments will be arranged if there is enough demand. There would be a 5-round event from Monday 8 to Friday 12 and a 4-round event from Monday 15 to Thursday 18. Each player would have one hour for all their moves. Please watch the Congress notice board for further information.

THE KEN DODD LAUGHTER SHOW

Competitors and their families are invited to be the guests of the Metropolitan Borough of Sefton at the Southport Theatre, Promenade, on Saturday 13 at 8.45 p.m.

Tickets will be issued on Wednesday 10 **only**, between 10 and 12 and 2 and 4 next to the Sales Office.

PHOTOGRAPHY EXHIBITION

There will be an exhibition of chessy photographs during the congress. There will be prizes for the best of these loaned by the competitors.

Please note that you should mark any photographs loaned with your name on the reverse. A reference note attached is likely to make the photograph more interesting. The organisers cannot be responsible for any damage or loss. You should collect your photographs before Friday afternoon 19 August.

BRITISH CHAMPIONSHIP

Name and Location of Player	R1	R2	R3	R4	R5	R6	R7	R8	R9	R10	R11	Pts.	Pos.
1 SPEELMAN Jonathan, London													
2 MESTEL Jonathan, Cambridge												8½	1st
3 HEBDEN Mark, Leicester												7	
4 CHANDLER Murray, London												8	2nd
5 JOHANSEN Darryl, Australia												7½	3rd=
6 BARUA Dibyendu, India												6	
7 LITTLEWOOD Paul, Billericay												7½	3rd=
8 ROGERS Ian, Australia												6	
9 HARTSTON William, Cambridge													
10 HÉBERT Jean, Canada												7½	3rd=
11 BOTTERILL George, Aberystwyth												6	
12 MURSHED Niaz, Bangladesh												6	
13 PRITCHETT Craig, London												7½	3rd=
14 RAVI SEKHAR Raja, India												6	
15 KOSTEN Anthony, Chandlers Ford												7½	3rd=
16 WATSON William, London												6	
17 RAVIKUMAR Vaidyanathan, India												7½	3rd=
18 HODGSON Julian, London												6	
19 FLEAR Glenn, London												5	
20 HORNER Jeff, Bolton												7	
21 LAWTON Geoffrey, Leicester												7	
22 LITTLEWOOD John, Skelmersdale												6	
23 DAVIES Nigel, Wrexham												5	
24 BYWAY Paul, Hoddesdon												7	
25 CUMMINGS David, Brighton												6	
26 COX John, Telford												6	
27 IVELL Nicholas, Blackpool												7½	3rd=
28 MARTIN Andrew, London												5	
29 WELLS Peter, Portsmouth												5	
30 BRITTON Richard, Hull												5½	
31 HAWKSWORTH John, Cranleigh												5½	

18

Name and Location of Player	R1	R2	R3	R4	R5	R6	R7	R8	R9	R10	R11	Pts.	Pos.
32 KNOX Victor, Cheadle												6	
33 LARGE Peter, London												5	
34 RICHARDSON John, London												4½	
35 BRADBURY Neil, Barnet												4½	
36 HOWELL James, Harrogate												4½	
37 SMITH Alan, Manchester												5	
38 ADY Jonathan, Watford												5	
39 LANE Gary, Paignton												5	
40 KERRIDGE Michael, Rugby												3½	
41 CONQUEST Stuart, St. Leonards-on-Sea												5½	
42 JACOBS Byron, Brighton												4½	
43 COOLEY Christopher, Kingston-upon-Thames												4½	
44 KNOTT Simon, London												5½	
45 HEMPSON Peter, Sheffield												4	
46 WADDINGHAM Graham, Nottingham												5	
47 WATSON Ian, Canterbury												4½	
48 BRAMELD Arthur, Fareham												2½	
49 JACKSON* Sheila, London												4½	
50 SMYTH Colin, Bangor, Co. Down												4	
51 CHAPMAN Terence, Wimbledon												4	
52 RAYNES Paul, Birmingham												3	
53 VARLEY Peter, Newport, Gwent												2½	
54 SUTHERLAND Alan, Grangemouth												3	
55 RICHMOND Peter, Pontypool												5½	
56 BURNETT Leon, Bradfield												4	
57 GARWELL* Jane, Pontypool												3	
58 SMITH Brian, Darlington												3½	
59 Nasir Ali												5	
60 Thipsay, Pravin													

19

Players 1-58 in approximate order of strength.

*Denotes competitor for Commonwealth Women's Championship.



SCHEDULE

The games are played at the rate of all the moves in 1½ hours for the two individual tournaments. All the moves in two hours for the team tournament. The BCF rules for quick play events will apply to all these games. Each of the tournaments will be run on the Swiss system.

The number of rounds in each event will depend on the number of entries.

Less than 8 entries	3 rounds
8-18 entries	4 rounds
19 or more entries	5 rounds

In all cases the first round must be completed by Sunday 14 August and the last by Friday afternoon 19 August. More detailed arrangements will be made by the organisers to the mutual convenience of the contestants. This should leave ample time for learning the basic theory of the game.

RULES

The standard rules of chess and of the British Chess Championships apply except where modified by the special requirements of Taliesin. Thus it is assumed that the full programme has been read. The arbiters of the events will be from Taliesin and any necessary Appeal

Committee formed between their staff and the BCF Arbiters. As this is a new venture, the right is reserved to alter and adjust the rules and programme of play.

BULLETIN

A bulletin containing all the game scores will be published in due course. This will be your opportunity to commence a collection of all the competitive games ever played of this fascinating game.

TALIESIN

36 SEAFIELD ROAD
LONGMAN
INDUSTRIAL ESTATE
INVERNESS IV1 1FG.
SCOTLAND.

Tel. (0463) 222002

THE WORLD'S FIRST TALIESIN COMPETITION

KING GEORGE V COLLEGE, SCARISBRICK NEW ROAD,
SOUTHPORT, MERSEYSIDE.

MONDAY 8 TO FRIDAY 19 AUGUST 1983

held in conjunction with the Grieveson, Grant British
Chess Championships.

TOURNAMENTS

There will be three tournaments. Entry is free to all of
them, and open to anyone. However, numbers are strictly
limited, so that you should enter as early as possible in
order to avoid disappointment.

PRIZES

Talisman Single Board Competition Prizes: £50 £25 £10

Taliesin Head to Head First Prize: £250

Taliesin Team Competition.* First Prize: £400

* For teams of 2-4

Prize-giving: Saturday 20 August at 9.30 a.m.

RATINGS

A rating system will be based on the two individual
Championships, assuming parity between them. Players
wishing to play further
rateable games during the
congress should consult the
Taliesin organisers.

TITLES

The Taliesin Head to Head
Champion will be awarded
the title of Taliesin Master
1st Dan. Future tourn-
aments where one plays 2 -
one plays 3- or one plays 4-
lead to higher levels of
attainment i.e. 2nd to 4th
Dan.



THE FRIENDS OF WOMEN'S CHESS

Dear Friend,

We should like to ask for your help — yes, you guessed — by help we really mean some of your hard-earned money. But before we do, maybe you would be interested in some facts.

Chess is primarily a mental exercise, although it requires general fitness like any other competition, and there is no significant difference between men's and women's mental abilities.

YET women chess players have so far been markedly weaker on average than men.

The English women's team consistently finishes in the world's top ten and in the 1976 Olympiad won the silver medals.

YET it is many years since there has been a Women's International Tournament in Britain and consequently our leading players receive few invitations to compete abroad.

We should like to try to remedy the situation — with your help.

We aim to raise funds to improve the standard and status of women's chess in this country.

So if you like chess, or women, or both, please become a Friend of Women's Chess. The annual subscription is £5.00 and anyone can join — that includes men, too! Give your money to Sheila Jackson during the Championships or send it to her (cheques payable to FoWC) at 17b Poynders Gardens, Poynders Road, London SW4.

You'll find it worth

the trip to

Mannequins

FASHIONS
SHOP

Stockists of



IN-WEAR

Design kristen leischer

35 Liverpool Road, Birkdale PR8 4AG
Telephone Southport 66430



Jaques
Original
Staunton

Chosen for all
Important Chess
Competitions for
over 100 years

Brochure
Available
From:—



Jaques

361, WHITEHORSE ROAD,
THORNTON HEATH,
SURREY.

THE BRITISH LADIES' CHAMPIONSHIP

Name and Location of Player	R1	R2	R3	R4	R5	R6	R7	Pts.	Pos.
1 BAINBRIDGE Sheila, <i>Crook McDonald L</i>								2½	14th
2 BRUCE Rowena, <i>Plymouth</i>								3½	8-11th
3 CHAKRABARTI Rani, <i>Wilmslow</i>								3	12-13th
4 CONDIE Alison, <i>Helensburgh</i>								4½	3-5th
5 FREND Jo, <i>London</i>								½	16th
6 FURSMAN Lynnette, <i>Glastonbury</i>								4	6-7th
7 HAMID Rani, <i>Bangladesh</i>								5	1-2nd
8 HINDLE Kathleen, <i>Cromer</i>								4	6-7th
9 JACKSON Rosemary, <i>Dundee</i>								3½	8-11th
10 McLURE Alison, <i>Glasgow</i>								3½	8-11th
11 MILLIGAN Helen, <i>St. Andrews</i>								5	1-2nd
12 ROGERS Jean, <i>London</i>								3½	8-11th
13 THACKRAY Patricia, <i>Leeds</i>								1½	15th
14 TRAVERS Cathy, <i>Australia</i>								3	12-13th
15 WOOD Suzzane, <i>London</i>								4½	3-5th
16 WRIGHT Dinah, <i>Wembley</i>								4½	3-5th
17									
18									
19									
20									

CROSS-TABLE FOR ALL-PLAY-ALL TOURNAMENT

Name and Location of Player	1	2	3	4	5	6	7	8	9	10	11	12	Pts.	Pos.
1														
2														
3														
4														
5														
6														
7														
8														
9														
10														
11														
12														

Pairing Table

Round 1: 1v12 2v11 3v10 4v 9 5v 8 6v 7
 Round 2: 12v 7 8v 6 9v 5 10v 4 11v 3 1v 2
 Round 3: 2v12 3v 1 4v11 5v10 6v 9 7v 8
 Round 4: 12v 8 9v 7 10v 6 11v 5 1v 4 2v 3
 Round 5: 3v12 4v 2 5v 1 6v11 7v10 8v 9

Round 6: 12v 9 10v 8 11v 7 1v 6 2v 5 3v 4
 Round 7: 4v12 5v 3 6v 2 7v 1 8v11 9v10
 Round 8: 12v10 11v 9 1v 8 2v 7 3v 6 4v 5
 Round 9: 5v12 6v 4 7v 3 8v 2 9v 1 10v11
 Round 10: 12v11 1v10 2v 9 3v 8 4v 7 5v 6
 Round 11: 6v12 7v 5 8v 4 9v 3 10v 2 11v 1

A = Austria, G = Germany, NL = Netherlands, S = Sweden, NZ = New Zealand
 NP = Norway (maybe?)

BLANK TABLES FOR TOURNAMENTS OF UP TO 11 ROUNDS

Do please renumber as you see fit! Extra copies from the Recorders' Office.

Name of Player	R1	R2	R3	R4	R5	R6	R7	R8	R9	R10	R11	Pts.	Pos.	
1 P Adams i 193	3/2 B 27 w 5	2 8	3 37	B 45	3 32	4 12	5 62	B 27	6 40	7 55				
2 G Antony i 184	4 9 w 7	1 1/2	2 2 1/2	w 44	B 78	B 30	w 46	5 42	w 73	B 165	w 84			
3 D Barnett 160	3 4 w 29	5 32	w 36	B 40	w 48	5 12	w 16	B 14	B 17	6 61				
4 A Barton i 188	w 3	B 24	w 13	B 31	w 17	B 21	w 34	B 35	w 50	B 60	w 70			
5 M Baumgartner (A) 169	w 42	B 57	w 1	1 1/2	5 33	2 2	2 3	4 5	5 5	6 30				
6 R Beach 196	w 17	B 67	w 59	7 6	w 35	B 20	w 34	8 70	w 5	B 184	w 41			
7 S Bell 202	5 48	w 12	B 31	w 16	B 60	B 28	w 70	w 29	B 59	w 24	B 77			
8 G Borrowdale i 181	B 25	w 35	B 44	w 66	B 21	w 36	5 48	w 18	B 32	w 24	B 83			
9 J Brookes E155	6 75	w 20	B 47	w 53	8 22	w 25	6 24	w 27	B 15	w 18	B 58			
10 H Brown i 116	B 26	w 64	B 58	5 33	w 50	B 31	2 2	3 2	3 2	3 2	4			
11 P Brown E120	w 72	B 42	w 39	B 167	B 57	w 24	WITHDRAWN							
12 P Cameron i 148	w 20	B 21	w 28	B 34	w 65	w 37	6 16	w 30	B 38	B 38	w 33			
13 S Chivers i 168	B 32	w 63	4 2	w 55	B 6	w 74	B 73	w 27	B 13	w 24	B 50			
14 I Clark 160	w 23	B 80	w 57	B 28	w 14	B 22	w 23	B 33	w 39	B 25	B 34			
15 M Cowling i 207	w 73	B 17	w 42	5 w 76	B 67	w 36	B 34	w 4	B 12	w 37				
16 S Dauber i 172	w 46	B 23	w 62	B 17	w 21	B 50	w 12	B 13	w 44	B 31	w 85			
17 D Denison i 174	6 6	w 15	B 75	w 51	B 4	w 44	B 30	w 78	B 5	w 13	B 34			
18 M Donohue 143	w 82	B 165	w 73	5 46	w 46	7 6	2 2	2 2	3 3	4 4	w 67			
19 A Dunnington i 192 J	w 56	w 58	2 7	w 61	B 66	w 26	B 60	w 45	B 71	w 59	7 7 (43)			
20 K Escott i 184	B 12	w 68	B 14	w 25	B 34	w 6	8 21	w 60	6 27	w 36	B 56			
21 S Fishburne i 198	B 53	w 12	B 83	w 56	B 16	w 4	4 7	w 59	B 64	B 66	w 76			
22 C Fisher i 135	w 28	B 76	w 38	B 63	w 19	w 14	3 2	B 13	w 5	w 55	B 153			
* 23 K Fuller i 188	B 14	w 26	B 51	w 30	B 68	w 60	B 31	B 24	w 71	B 35	8 47 (47)			
24 J Greenhough 126	6 30	w 75	B 29	B 73	w 33	B 11	w 4	B 83	w 57	B 13	w 14			
25 P Griffiths i 127	w 8	B 39	w 12	B 20	w 73	B 9	w 23	B 64	B 37	w 114	w 74			
26 B Gvero i 180	w 10	B 23	B 52	w 69	w 34	B 19	w 6	B 46	B 36	w 53	B 44			
27 B Halliwell 167	w 47	B 1	w 54	B 35	w 49	B 22	w 21	B 9	w 35	B 83	w 81			
28 R Haydon E182	B 22	w 78	B 12	w 14	B 64	w 17	B 27	w 37	B 33	w 56	B 80			
29 T Hazdra (A) E190	w 84	B 3	w 24	B 41	w 81	B 30	w 7	6 7	w 64	B 19	w 64			
30 D Horseman 181	w 24	B 19	w 16	B 23	w 43	B 35	w 17	B 14	w 34	B 44	w 45			
31 O Jackson i 186	w 51	B 74	w 7	B 47	w 62	B 1	w 71	B 22	w 57	B 42	w 60			
32 B Jones 191	w 13	B 63	2 2	w 52	w 35	B 42	4 5	5 5	6 7	8 71				
33 C Jowett 145	B 71	w 16	B 61	w 10	B 24	w 27	B 18	2 2	2 2	2 2	B 12			
* 34 E Lea E186	B 61	w 56	B 71	w 68	B 18	w 78	B 6	w 52	w 23	B 17	w 17			
35 M Levene (N2) 201	w 38	B 38	w 84	B 71	w 70	w 47	B 59	w 4	5 5	w 43	w 23			
36 G Lilley i 170	w 1	B 59	w 74	B 3	w 58	B 9	w 42	B 38	w 26	B 20	w 72			

* qualified for British

BLANK TABLES FOR TOURNAMENTS OF UP TO 11 ROUNDS

Do please renumber as you see fit! Extra copies from the Recorders' Office.

Name of Player	R1	R2	R3	R4	R5	R6	R7	R8	R9	R10	R11	Pts.	Pos.
37 C Lowe i175	w 62	b 49	w 19	b 1	w 35	b 22	w 32	b 28	w 20	b 54	w 6		
38 G McCormick 175	b 35	w 50	b 22	w 58	b 32	w 66	b 51	w 36	b 56	w 12	b 48		
39 N McShahy E170	b 78	w 135	b 11	w 72	b 51	w 39	b 64	w 15	b 14	w 16	b 75		
40 G Mason 178	w 80	b 70	w 85	b 43	w 3	b 46	w 62	b 53	b 15	w 8	b 28		
41 G Melitus	w												
42 S Mulligan 169	b 44	w 11	b 15	w 27	b 72	w 32	b 36	w 2	b 45	w 21	b 16		
43 S Nimar 193	b 5	w 55	b 56	w 40	b 20	w 71	b 82	w 71	b 35	w 40	b 7		
44 D Norwood i193J	w 42	b 82	w 80	b 1	w 30	b 13	w 18	b 76	w 72	b 63	w 26		
45 M Page i186	w 74	b 53	w 81	b 84	w 1	b 54	w 79	b 17	w 42	b 55	w 16		
46 F Parr i195	b 16	w 51	b 20	w 18	b 56	w 40	b 2	w 26	b 55	w 68	b 43		
47 G Pearce 191	b 27	w 66	b 60	w 31	w 78	b 65	w 63	b 85	w 43	b 82	w 19		
48 D Phillips i176	w 6	b 14	w 4	b 80	w 67	b 2	w 22	b 31	w 12	b 4	w 38		
49 A Redfern i150	b 2	w 37	b 69	w 57	b 27	w 93	b 28	w 61	b 16	w 35	b 66		
50 A Roberts 139	b 57	b 38	w 76	w 21	b 10	w 16	w 94	b 29	w 74	b 33	w 13		
51 S Roe 183	w 30	b 46	w 73	b 17	w 39	b 29	w 85	b 24	w 1	b 52	w 63		
52 J Saunders 194	w 67	b 73	w 26	b 70	w 53	b 63	w 35	b 34	w 79	b 82	w 54		
53 J Sharp i175	w 21	w 45	b 77	w 22	b 52	b 47	w 5	b 40	w 28	b 26	w 22		
54 J Steadman (N?) 189	b 64	w 60	b 27	w 12	b 55	w 45	b 4	w 65	b 28	w 37	b 52		
55 M Stichberger (A) 182	w 57	b 43	w 70	b 13	w 44	b 65	w 59	b 21	w 46	b 22	w 7		
56 N Stockel (A) 169	b 19	b 34	w 43	b 74	w 46	w 72	b 15	b 37	w 38	b 28	w 20		
57 B Thompson E135	b 55	w 5	b 14	b 49	w 11	b 74	w 58	w 56	b 24	b 76	w 61		
58 A Toll i151	w 70	b 19	w 10	b 35	b 36	w 61	b 57	w 2	b 33	b 18	w 9		
59 J Vickery i187	b 66	w 50	b 16	w 78	b 52	w 68	b 66	w 77	w 82	b 19	w 62		
60 I Upton i180	w 35	b 24	w 47	b 79	w 7	b 23	w 19	b 20	w 82	w 14	w 81		
61 A Béner (S) 152J	w 34	b 85	w 33	b 19	w 8	b 58	w 81	b 49	w 83	b 74	b 57		
62 R Granat i201	b 37	w 71	b 16	w 64	b 31	w 75	b 40	w 65	w 75	b 8	w 69		
63 J Houtman (NL) 179	b 83	w 32	b 78	w 75	b 77	w 52	b 47	w 64	b 62	w 44	b 51		
64 J Menadue i164	w 54	b 10	w 20	b 62	w 18	b 50	w 25	w 21	b 79	b 24	w 24		
65 J Moore i178	b 68	w 18	b 66	w 22	b 72	w 59	b 54	b 6	w 12	w 79			
66 S Neumann (G) 155	w 59	b 47	w 65	b 2	w 19	b 38	w 5	b 67	b 29	w 21	w 49		
67 F Schaliy (NL) 171	b 52	w 1	b 12	w 11	b 48	w 15	b 26	w 66	b 77	w 78	b 118		
68 J Sugden i210	w 65	b 20	w 82	b 34	w 23	b 59	w 84	b 32	w 70	b 46	w 80		
69 D Tebr i177	w 79	b 31	w 49	b 26	w 74	b 3	w 39	b 45	w 7	b 73	w 13		
70 J Weide (NL) 186	b 58	w 40	b 55	w 52	b 35	w 53	b 17	w 46	b 68	w 77	b 4		
71 B Westra (NL) 184	w 33	b 62	w 34	b 35	b 47	w 82	b 31	b 43	w 91	b 23	w 62		
72 H Bosveld (NL) E180	b 11	w 77	w 180	b 39	w 42	b 56	w 3	b 79	b 47	w 15	b 7		

BLANK TABLES FOR TOURNAMENTS OF UP TO 11 ROUNDS

Do please renumber as you see fit! Extra copies from the Recorders' Office.

Name of Player		R1	R2	R3	R4	R5	R6	R7	R8	R9	R10	R11	Pts.	Pos.
73 M Buckmaster	176	B 15 1/2	W 52 1/2	B 18 1/2	W 24 1/2	B 25 2 1/2	B 62 2 1/2	W 13 3 1/2	W 75 4	B 2 4	W 69 5	B 78 5 1/2		
74 D Bull	1151	B 45 0	W 48 1/2	B 76 1	W 56 1	B 69 1	W 57 2	B 29 2	W 5 2	B 50 3	W 61 4	B 25 4 1/2		
75 D Corless	1187	W 9 1/2	B 24 1/2	W 17 2 1/2	B 63 2 1/2	W 80 3	B 84 3 1/2	W 76 4	B 73 4	B 2 4	W 67 4 1/2	B 39 5		
76 A De Boer (N)	E175	B 77 0	W 22 1/2	B 50 1/2	W 16 1 1/2	B 15 2	W 18 3	B 75 3 1/2	W 44 3 1/2	B 3 3 1/2	W 57 4 1/2	B 21 4 1/2		
77 T Farrand	201	W 76 1	B 72 2	W 53 3	B 82 3 1/2	W 83 4	B 43 4 1/2	W 23 4 1/2	B 59 4 1/2	W 67 5 1/2	B 10 6 1/2	W 17 7 1/2		
78 J Hawthorne	1193 J	W 39 1	B 28 2	W 43 2 1/2	B 59 2 1/2	W 2 3	B 24 3 1/2	W 49 4	B 17 4 1/2	W 54 5	B 10 5 1/2	W 73 6 1/2		
79 C Holland	1209	B 69 1	W 31 1/2	B 2 2	W 60 2 1/2	B 26 3	W 51 4	B 45 4 1/2	W 72 4 1/2	B 52 5 1/2	W 64 6 1/2	B 65 7		
80 T Pioch (G)	213	B 40 0	W 14 1	B 72 1 1/2	W 48 2 1/2	B 75 3	W 2 3 1/2	B 53 4 1/2	W 82 5 1/2	B 7 6 1/2	W 17 7 1/2	B 88 8 1/2		
81 P Robson	E153	B 31 0	W 67 1	B 45 1	W 4 1	B 29 1	W 16 2	B 11 2 1/2	W 48 3	B 5 3	W 100 3 1/2	B 71 3 1/2		
82 S Rodricks	1183	B 18 1	W 44 2	B 68 3	W 77 3 1/2	W 59 4 1/2	B 71 5	W 43 5	B 90 5	B 60 5 1/2	W 52 6	B 35 6		
83 N Smith	109	W 63 0	B 13 0	W 21 1/2	B 9 1	W 15 1 1/2	B 49 1 1/2	W 14 2	B 24 2 1/2	B 61 3	W 27 3 1/2	W 8 4		
84 D Stephenson	165	B 29 1	W 4 2	B 25 2	W 45 2 1/2	B 14 3	W 75 4	B 63 4	W 51 4	B 30 5	W 16 5 1/2	B 12 5 1/2		
85 JGallagher	205	B 60 0	W 61 1	B 40 1	W 27 2	B 87 3	W 36 4	B 55 5	W 47 5 1/2	B 36 5 1/2	B 45 6	W 82 7		
86														
87														
88														
89														
90														
91														
92														
93														
94														
95														
96														
97														
98														
99														
100														
101														
102														
103														
104														
105														
106														
107														
108														

**SUPPORT THE
FRIENDS OF CHESS**



*All funds applied towards Britain's participation in
International Chess*



DONATIONS AND SUBSCRIPTIONS

(Friend £12 : Patron £30)

**To The Treasurer
Friends of Chess
19 The Ridings
Frimley, Camberley
Surrey**

MANCHESTER 061-236 3587

Showroom & Sales Offices
Graeme House, Chorlton-cum-Hardy
Manchester M21 1BU

LIVERPOOL 051-227 4789

Showroom & Sales Offices
Cotton Exchange Buildings
Bixteth Street
Liverpool

BRADFORD 0274 683931
(Pennine Reprographic Ltd.)

SHEFFIELD 0742 752975
(Pennine Reprographic (SY) Ltd.)

K. H. VICKERS (COPYING CONSULTANTS) LTD

Head Office
Bombay House,
59 Whitworth Street,
Manchester M1 7BP.

Tel: 061-236 3587/8/9



**ALL MITSUBISHI U-BIX
COPIERS**

1. We are legally bound by our contract with the MITSUBISHI U-BIX organization to provide service within **4 hours** upon request.
2. We are prepared to indemnify you against any distress or traumatic situation in respect of any MITSUBISHI U-BIX copier.
3. We are prepared to organize a **MONEY-BACK GUARANTEE** with your own accountants determining fair depreciation at any time.
4. We are prepared to have your leasing liability transferred to ourselves should machine or service performance cause you distress.
5. We are prepared to make available our entire U-BIX user population for reference purposes.

LIST OF COMPETITORS

This year competitors are being listed in a new format in order to reduce costs by saving space. It was not possible to insert latest entries alphabetically.

It is suggested that you transfer the names of players in the section(s) that interest you to the appropriate blank charts. Extra loose-leaf blank charts are available on request.

BRITISH UNDER-21 CHAMPIONSHIP

1 CASEY Gerard, *Strabane*; 2 DAWSON Craig, *Birmingham*; 3 DAWSON Gary, *Birmingham*; 4 DONOVAN Patrick, *Bexhill-on-Sea*; 5 DUCKERS Harvey, *Wirral*; 6 FLETCHER David, *Bradford*; 7 FORSTER Michael, *Newcastle-upon-Tyne*; 8 KIDD Colin, *Ealing*; 9 LAWSON Andrew, *Prudhoe*; 10 LEE Edward, *Ilford*; 11 LUND Brett, *Preston*; 12 NIZETIĆ Philip, *London*; 13 PATTERSON Graham, *Liverpool*; 14 PAYNE Steven, *Wivenhoe*; 15 PEACOCK Malcolm, *Leicester*; 16 RICHARDSON Kevin, *Gloucester*; 17 SIMONS Martin, *Bournemouth*; 18 THOMAS Nicholas, *Northampton*; 19 WAINWRIGHT Timothy, *Pinner*; 20 WOODHOUSE Stephen, *Nottingham*; 21 WALL Nicholas, *Wirral*.

BRITISH UNDER-18 CHAMPIONSHIP

1 BARNES Michael, *Nottingham*; 2 BARTON Richard, *Southport*; 3 BURT Timothy, *Bristol*; 4 CRICKMORE Neil, *Plymouth*; 5 DOEL Andrew, *Bristol*; 6 DOVE* Emma, *Portsmouth*; 7 GODDARD Chris, *Scarborough*; 8 GREER Nigel, *Belfast*; 9 HENNIGAN Michael, *London*; 10 HIBBS Andrew, *Harrow*; 11 HIRSCH Benedict, *Bournemouth*; 12 HOOD Simon, *Alsager*; 13 HYNES Antony, *Crewe*; 14 KEMP Peter, *Sutton*; 15 LAZARUS Simon, *Finchley*; 16 LINTOTT Jonathan, *Oxford*; 17 LLEWELLYN Julian, *Bath*; 18 McDONALD* Louise, *Australia*; 19 MARSLAND Stephen, *Crewe*; 20 OKOSIEME Iozeph, *Southampton*; 21 ORMROD Joseph, *Prescot*; 22 RICHMAN Saul, *Manchester*; 23 SAMPSON Mark, *Brierley Hill*; 24 SAVAGE Andrew, *Southport*; 25 SAYERS Raymond, *Washington*; 26 SHARP Brian, *Kidderminster*; 27 SIMONS Conrad, *Stockport*; 28 STEPHENSON Charles, *Morpeth*; 29 THORNTON Mark, *Newcastle-upon-Tyne*; 30 TURNER Ian, *Wirral*; 31 VINCENT Moray, *Billingham*; 32 WALKER* Susan, *Sutton*; 33 WALL Timothy, *Newcastle-upon-Tyne*; 34 WATSON Simon, *Lincoln*; 35 WATTS David, *Pinner*; 36 WRIGHT Andrew, *Dundee*.

[*denotes competitor in girls' championship]

BRITISH UNDER-16 CHAMPIONSHIP

1 ADES Mark, *Bolton*; 2 BAILEY Guy, *Havant*; 3 BAILLIE Jeffrey, *Portsmouth*; 4 BARTON Peter, *Southport*; 5 BROWN Paul, *Harrow*; 6 BURGESS Graham, *Southport*; 7 CARVALHO* Michèle, *Croydon*; 8 CHRISTOPHER* Sarah, *Scunthorpe*; 9 CLARKE James, *Shrewsbury*; 10 COATHUP Roger, *Stockport*; 11 COHEN* Fenella, *London*; 12 CRADDOCK Paul, *Pinner*; 13 DALEY Andrew, *Southsea*; 14 DUGGAN John, *Wanstead*; 15 DUNN Andrew, *Washington*; 16 DUNWORTH Christopher, *West Bridgford*; 17 EAMES Robert, *Long Eaton*; 18 EAVES* Mina, *Coventry*; 19 FORBES* Catherine, *London*; 20 GALLOWAY Iain, *Sidcup*; 21 GRIFFIN Douglas, *Airdrie*; 22 HARSKIN Robin, *Sutton*; 23 HAZELTON Martin, *Durham*; 24 HEPWORTH* Mandy, *Pulborough*; 25 HORROCKS Benjamin, *Newcastle-upon-Tyne*; 26 KEEHNER* Katie, *London*; 27 KNOX David, *Cheadle*; 28 McDONALD Neil, *Gravesend*; 29 MADDEN Paul, *Bingley*; 30 MASON Donald, *Solihull*; 31 MORRIS Philip, *Gravesend*; 32 OSBORNE Andrew, *Plymouth*; 33 PENFOLD Steven, *Pinner*; 34 RIZVI Asad, *Hendon*; 35 SHARP Jeremy, *London*; 36 SOLOMON Gavin, *Pinner*; 37 STOKES Peter, *Durham*; 38 STONE Andrew, *Uxbridge*; 39 TALBOT Andrew, *Rugby*; 40 VON SCHLIPPE Nicolas, *London*; 41 WALKER Keith, *Southampton*; 42 WARD Christopher, *Sevenoaks*; 43 WHALLEY Peter, *Emsworth*; 44 WHEELER Mark, *Walsall*; 45 WHISTON Christopher, *Formby*; 46 GREER Kieran, *Belfast*; 47 SIMS Christopher, *Neath*.

[*denotes competitor in girls' championship]

BRITISH UNDER-14 CHAMPIONSHIP

1 ADAMS Michael, *Truro*; 2 BARTON Christopher, *Southport*; 3 BEAKE Benjamin, *Ashford, Middx*; 4 BURTON Paul, *Walsall*; 5 BUTT Christopher, *Plymouth*; 6 CARLIN John, *Harrow*; 7 CARTON Niall, *Newcastle, Co. Down*; 8 CARTON Patrick, *Newcastle, Co. Down*; 9 COOK Craig, *Oldham*; 10 CRAGGS David, *Leeds*; 11 CUNNINGHAM* Lorian, *Waterlooville*; 12 DARGAN Paul, *Whitley Bay*; 13 DIXON Harry, *Ealing*; 14 DUNCAN Christopher, *Pinner*; 15 EARL Steven, *Oxford*; 16 FLEETWOOD Andrew, *Liverpool*; 17 FLEETWOOD John, *Liverpool*; 18 GEORGHIOU Paul, *London*; 19 GLASS Kenneth, *Hartlepool*; 20 HALLETT* Caroline, *Waterlooville*; 21 HOWE Kevin, *Hull*; 22 HUGHES Philip, *Wembley*; 23 HUTCHINGS Jonathan, *Torquay*; 24 JAMES Dale, *Oldham*; 25 JOHNSON* Deborah, *Hull*; 26 JONES* Nancy, *Sheffield*; 27 KEECH Paul, *Oldham*; 28 KENDALL Timothy, *Plymouth*; 29 KNOX Geoffrey, *Cheadle*; 30 LEESON Philip, *Liverpool*; 31 LEWIS Richard, *Torquay*; 32 LOW Sampson, *Hampton*; 33 McILROY Gerard, *Newtownabbey*; 34 MACK Andrew, *Bromley*; 35 MACLEAN Toby, *London*; 36 MAULLIN Robert, *Sutton Coldfield*; 37 MEHTA Devesh, *Brentwood*; 38 MORTAZAVI Ali, *London*; 39 MUKHERJEE Paul, *Shrewsbury*; 40 NASH Richard, *Harrow*; 41 O'FARRELL Daniel, *Southampton*; 42 PEREIRA* Lizette, *London*; 43 PHILLIPS Roy, *Barnstaple*; 44 QUILLAN Gary, *Bootle*; 45 ROBERTS John, *Southport*; 46 ROSSITER Philip, *Waterlooville*; 47 SIMPSON Diarmuid, *Antrim*; 48 SUMMERSCALE Aaron, *Putney*; 49 THACKER Rajeev, *Hounslow*; 50 VETTA Justin, *Oxford*; 51 WALL Gavin, *London*; 52 WAY Julian, *Esher*; 53 WHEELER Darren, *Walsall*; 54 WILLIAMS* Hazel, *Liverpool*; 55 WOOD David, *Chatham*; 56 COLLINS Martin, *Basingstoke*; 57 FUNNELL Nicholas, *Sheffield*.

[*denotes competitor in girls' championship]

BRITISH UNDER-11 CHAMPIONSHIP

1 AKEHURST James, *Hartlepool*; 2 AKEHURST Robert, *Hartlepool*; 3 ALDRIDGE Daniel, *Bournemouth*; 4 ARMSTRONG David, *Brigg*; 5 ASHBY* Ann-Marie, *Coventry*; 6 ASHBY* Claire, *Coventry*; 7 BALL Harry, *Belfast*; 8 BAILEY Julian, *Havant*; 9 BECKETT Roger, *Belfast*; 10 BEIGHTON Jonathan, *Leek*; 11 BELLINGER Rupert, *Horsmonden*; 12 BIRKS Richard, *Skegness*; 13 BUCKLEY Graeme, *Wolverhampton*; 14 BURROUGHS Antony, *Southport*; 15 CARTON Dara, *Newcastle, Co. Down*; 16 CAVENDISH James, *London*; 17 COOK Damon, *Northfleet*; 18 DUNCAN Benedict, *Pinner*; 19 DUNCAN Oliver, *Pinner*; 20 EASTON David, *Grangemouth*; 21 EAVES Richard, *Coventry*; 22 EDWARDS Robert, *Waterlooville*; 23 FLEETWOOD Michael, *Liverpool*; 24 FLYNN Gary, *Grangemouth*; 25 FOLLETT Saul, *Reading*; 26 GLASS Jason, *Hartlepool*; 27 GRIGGS Gerald, *Holbeach*; 28 HARVEY Daniel, *Southport*; 29 HARVEY Derek, *Grangemouth*; 30 HASLAM Christopher, *Southport*; 31 HAYES Jonathan, *Ilford*; 32 HENNIGAN Paul, *London*; 33 HOLLAND Edward, *Waterlooville*; 34 HOLLAND* Emilia, *Waterlooville*; 35 HOWE Darren, *Hull*; 36 HOWE Gavin, *Hull*; 37 HUGHES Dominic, *Wembley*; 38 HUTCHINGS Martin, *Torquay*; 39 ISAACS Mark, *London*; 40 JONES Lee, *Sheffield*; 41 JOWETT Peter, *Lytham St. Annes*; 42 KEEHNER Andrew, *London*; 43 KUMARAN Dharshan, *Harrow*; 44 LEWIS Alex, *Manchester*; 45 LOCKETT Paul, *Leek*; 46 MACHIN Steven, *Holbeach*; 47 NEWMAN Edward, *Stonehouse*; 48 O'FARRELL* Genevieve, *Southampton*; 49 PAIN Jonathan, *Glossop*; 50 PAIN Simon, *Glossop*; 51 PICKERING Andrew, *Exeter*; 52 PILLAY John, *Southampton*; 53 POTHECARY* Donna, *Fareham*; 54 PRIYASANTHA Ariya, *Bury*; 55 PURRINGTON Justin, *Rickmansworth*; 56 RAFFERTY* Jeanette, *Oldham*; 57 ROGERS Jonathan, *Brentwood*; 58 SABARATNAM Ben, *Sittingbourne*; 59 SADLER Matthew, *Chatham*; 60 SINGHAL Sumeet, *Birmingham*; 61 SUMMERS Timothy, *Stamford*; 62 THOMAS Joseph, *Shrewsbury*; 63 VETTA Adrian, *Oxford*; 64 VETTA Paul, *Oxford*; 65 WALKER Mark, *Southampton*; 66 WALLACE Iain, *Grangemouth*; 67 WATTS Michael, *Pinner*; 68 WHITEHOUSE Dean, *Wolverhampton*; 69 WHITESIDE Stuart, *Southport*; 70 WHITWORTH Philip, *Oldham*; 71 WOODHOUSE Peter, *Southport*; 72 BATES Caspar, *London*; 73 BATES Pascal, *London*; 74 SINCLAIR Sebastian, *Preston*.

[*denotes competitor in girls' championship]

BRITISH VETERANS CHAMPIONSHIP

1 AITKEN James, *Cheltenham*; 2 BRUCE Ronald, *Plymouth*; 3 HOAD Philip, *Chester*; 4 RICHARDSON Frank, *St. Annes-on-Sea*; 5 STANDRING Harry, *Sheffield*; 6 WAGSTAFF Roy, *London*; 7 WHITE Richard, *Lingfield*; 8 WOOLVERTON Harry, *London*; 9 COOTES Arthur, *Belfast*; 10 COTTERELL John, *Enfield*.

MAJOR OPEN TOURNAMENT

1 ADAMS Philip, *Oldham*; 2 ANTHONY Gareth, *Gloucester*; 3 BARNETT Douglas, *Sandbach*; 4 BARTON Alan, *Leicester*; 5 BAUMGARTNER Martin, *Austria*; 6 BEACH Richard, *Stoke-on-Trent*; 7 BELL Stephen, *Southampton*; 8 BORROWDALE Graham, *Ascot*; 9 BROOKES John, *Southampton*; 10 BROWN Harold, *Royal Air Force*; 11 BROWN Paul, *Royal Air Force*; 12 CAMERON Philip, *Formby*; 13 CHIVERS Stephen, *Bournemouth*; 14 CLARK Ian, *Bournemouth*; 15 COWLING Miles, *Poole*; 16 DAUBER Stephen, *Darlington*; 17 DENISON Denis, *Wakefield*; 18 DONOHUE Michael, *Manchester*; 19 DUNNINGTON Angus, *Castleford*; 20 ESCOTT Keith, *Sutton Coldfield*; 21 FISHBURNE Stewart, *Birmingham*; 22 FISHER Charles, *Southport*; 23 FULLER Keith, *Winchester*; 24 GREENOUGH John, *Thorpe Bay*; 25 GRIFFITHS Paul, *Warrington*; 26 GVERO Bosko, *Bradford*; 27 HALLIWELL Bruce, *Leeds*; 28 HAYDON Richard, *Swindon*; 29 HAZDRA Thomas, *Austria*; 30 HORSEMAN Derek, *Southport*; 31 JACKSON Oliver, *Wilmslow*; 32 JONES Brian, *Sheffield*; 33 JOWETT Conrad, *Lytham St. Annes*; 34 LEA Edward, *Horley*; 35 LEVENE Mark, *New Zealand*; 36 LILLEY Graham, *St Helens*; 37 LOWE Christopher, *Paignton*; 38 McCORMICK Graeme, *Belfast*; 39 McSHEEHY Nigel, *Birmingham*; 40 MASON Guy, *Thornton Heath*; 41 MELITUS Gregory, *London*; 42 MULLIGAN Stephen, *Blackpool*; 43 NIMAN Stuart, *Manchester*; 44 NORWOOD David, *Bolton*; 45 PAGE Mark, *London*; 46 PARR Frank, *Ewell*; 47 PEARCE Gareth, *Cardiff*; 48 PHILLIPS David, *Ambleside*; 49 REDFERN Alan, *Maghull*; 50 ROBERTS Arthur, *Southport*; 51 ROE Simon, *Dunstable*; 52 SAUNDERS John, *Kingston-upon-Thames*; 53 SHARP John, *Kidderminster*; 54 STEEDMAN James, *Darlington*; 55 STICHLBERGER Martin, *Austria*; 56 STÖCKL Norbert, *Austria*; 57 THOMPSON Brian, *Wirral*; 58 TOLL Alec, *Royal Air Force*; 59 VICKERY Jim, *Leeds*; 60 UPTON Ian, *London*; 61 BÉNER Anna, *Sweden*; 62 GRANAT Russell, *London*; 63 HOUTMAN Joop, *the Netherlands*; 64 MENADUE JFS, *Truro*; 65 MOORE John, *Rayleigh*; 66 NEUMANN Stefan, *West Germany*; 67 SCHALIJ Frits, *the Netherlands*; 68 SUGDEN John, *Beckenham*; 69 TEBB David, *Wirral*; 70 WEIDE Jan, *the Netherlands*; 71 WESTRA Bart, *the Netherlands*.

CLASS TOURNAMENTS

The division of competitors into sections will be made very shortly before the start of the Congress on the basis of the most up-to-date grading information.

AMRAM Roger, *France*; BEADLE John, *Norwich*; BERKLEY Stephen, *Ormskirk*; BOSWELL Alec, *Liverpool*; CLARKE William, *Shrewsbury*; CLOW Kenneth, *Benfleet*; COLLINS John, *Chorley*; CUNDY Iain, *Bristol*; DANSEY Paul, *St. Neots*; DEKANY Andrew, *London*; DRISCOLL Michael, *Wirral*; DURNELL Peter, *Stourport-on-Severn*; EDWARDS Paul, *Chester-le-Street*; EVERITT David, *Haywards Heath*; FEINSTEIN Daniel, *London*; GLASS Trevor, *Hartlepool*; HALL Michael, *Chester-le-Street*; HOWE Neil, *Hull*; HURT Andrew, *Burton-on-Trent*; JOHNSON Edward, *Hull*; LEANSE Martin, *London*; LEEMING David, *Liverpool*; MACINDOE Duncan, *Dagenham*; MACLEAN Donald, *London*; NICHOLAS John, *London*; PINKERTON Arthur, *Belfast*; ROSS Robert, *Hull*; SAGE Antony, *Bath*; SAVERY James, *Tenbury Wells*; STOKES Paul, *London*; WHITE Alan, *Manchester*; WOODRUFF David, *Bristol*; SINCLAIR Colin, *Preston*.

5-DAY TOURNAMENT, WEEK 1 MORNING

1 BAKER Roger, *Bakewell*; 2 BELLINGER Robin, *Horsmonden*; 3 BROOME Timothy, *Belfast*; 4 BUZZARD Kevin, *High Wycombe*; 5 BUZZARD Roger, *High Wycombe*; 6 DOBSON John, *Leeds*; 7 ELLIS Richard, *Northampton*; 8 EWART Brian, *Liverpool*; 9 HAYES Gerard, *Ilford*; 10 JONES Robert, *Aldridge*; 11 KEEHNER John, *London*; 12 LITTLE John, *Newcastle-upon-Tyne*; 13 McNAUGHTON Michael, *Liverpool*; 14 MOUILLAUX Lucien, *France*; 15 RUFFLE Alan, *Stourbridge*; 16 SHAPIRO Stephen, *Edgware*; 17 SINGHAL Saket, *Birmingham*; 18 SPEIGEL Jack, *London*; 19 SUMMERS Alastair, *Stamford*; 20 VETTA Atam, *Oxford*; 21 WALLACE David, *Grangemouth*; 22 WATTS Alan, *London*; 23 WHITWORTH Ian, *Oldham*; 24 COSTELLO Colin, *London*; 25 DAVIES Gordon, *Hertford*; 26 DAVIES Neil, *Hertford*; 27 EAMES Richard, *Berkhamsted*; 28 HARRIGAN Michael, *Lichfield*; 29 LATHAM Elliot, *Southport*; 30 SEERY Philip, *Lancaster*; 31 WILLIS Andrew, *Walsall*.

5-DAY TOURNAMENT, WEEK 1 AFTERNOON

1 BARKWILL Martin, *London*; 2 BHATIA Harish, *London*; 3 BOND Peter, *Formby*; 4 BRADBURY Frederick, *Southport*; 5 BRUCE Rowena, *Plymouth*; 6 CALVERT Mark, *Formby*; 7 COLES Martin, *Wembley*; 8 DICKSON David, *Wrexham*; 9 FAULKNER David, *Hull*; 10 GLOVER George, *Carlisle*; 11 GORKA Carl, *Basingstoke*; 12 GORKA Robert, *Basingstoke*; 13 HALL Arthur, *Goring-by-Sea*; 14 JENNER Peter, *Southport*; 15 McINNES Graham, *Liverpool*; 16 NICHOLAS Louis, *Transvaal*; 17 O'CONNELL Michael, *Burscough*; 18 O'HARA Michael, *Bolton*; 19 TWITCHELL David, *Great Yarmouth*; 20 DE JONG Siegbert, *the Netherlands*; 21 GILL Frederick, *Kirkham*; 22 SELMEIER Franziska, *the Netherlands*.

5-DAY TOURNAMENT, WEEK 2 MORNING

1 ANDREW Donald, *Doncaster*; 2 BALL Harry, *Belfast*; 3 BECKETT Roger, *Belfast*; 4 BOND Peter, *Formby*; 5 BORLAND Thomas, *Chester*; 6 BRASS Jörg, *West Germany*; 7 BROOME Timothy, *Belfast*; 8 CALVERT Mark, *Formby*; 9 EWART Brian, *Liverpool*; 10 GARDNER Allan, *Bolton*; 11 GOODHEAD James, *Derby*; 12 HADDRELL Richard, *Tunbridge Wells*; 13 JOHNSTON James, *Rainford*; 14 JONES Trevor, *Tunbridge Wells*; 15 MOUILLAUX Lucien, *France*; 16 O'CONNELL Michael, *Burscough*; 17 PETERS John, *Hayling Island*; 18 REDHEAD Clifford, *Wirral*; 19 REESE Jonathan, *Runcorn*; 20 REESE Shane, *Runcorn*; 21 SHERWOOD Dennis, *Wetherby*; 22 SPEIGEL Jack, *London*; 23 STEVENS Arthur, *Formby*; 24 TANKEL Alan, *Glasgow*; 25 TRANGMAR Leigh, *Beckenham*; 26 TURNOCK John, *Newcastle-upon-Tyne*; 27 WRIGHT John, *Bromley*; 28 YORK Leon, *Frome*; 29 ANDERSON Peter, *London*; 30 HARRIGAN Michael, *Lichfield*; 31 SPENCER Christopher, *Southport*.

5-DAY TOURNAMENT, WEEK 2 AFTERNOON

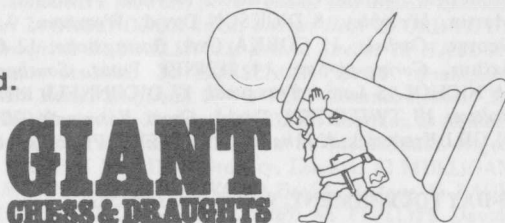
1 BARLOW Bertrand, *Ewell*; 2 BRADBURY Frederick, *Southport*; 3 COLES Martin, *Wembley*; 4 FRASER Michael, *Southport*; 5 FURSMAN Robert, *Clevedon*; 6 GLOVER George, *Carlisle*; 7 GORKA Carl, *Basingstoke*; 8 GORKA Robert, *Basingstoke*; 9 HARDMAN Michael, *Liverpool*; 10 HINDLE Mark, *Cromer*; 11 HYNES Thomas, *Manchester*; 12 JOWETT Peter, *Lytham St. Annes*; 13 McINNES Graham, *Liverpool*; 14 MARQUEZ Stephen, *Altrincham*; 15 NICHOLAS Louis, *Transvaal*; 16 O'HARA Michael, *Bolton*; 17 PRIMETT Philip, *Haywards Heath*; 18 RUSSELL Peter, *Liverpool*; 19 SIMPSON Alastair, *Brentwood*; 20 SMITH Andrew, *Portsmouth*; 21 SMITH David, *Portsmouth*; 22 STARK Michael, *Southport*; 23 THOMAS B., *Chelmsford*; 24 TREGLOWN Roger, *Altrincham*; 25 TURNER Michael, *Wirral*; 26 TWITCHELL David, *Great Yarmouth*; 27 WILSON Christopher, *Lymm*; 28 DE JONG Siegbert, *the Netherlands*; 29 PLATER Ronald, *Newcastle-upon-Tyne*.

GIANT CHESS

Daily
in the courtyard

For details of pieces contact:

Angus Hanton
Giant Chess & Draughts Ltd.
16 Dalberg Road
London SW2 1AN
Tel: 01-737 0070



Jones and brother sewing machines
brother knitting machines
brother office equipment
brother and **kansal** industrial sewing machines
Shepley Street, Manchester M34 5JD (061-330 6531)

Brother Industries Limited was founded in 1934 in Nagoya, Japan as a manufacturer of domestic sewing machines. The ensuing 50 years have seen its precision engineering skills diversified through industrial sewing machines and domestic knitting machines into electronic typewriters and printers for the office market.

In the United Kingdom Jones + Brother is a combination of the Jones Sewing Machine Company, a 1968 Brother acquisition, and the Brother Office Equipment Division. It is based at a 20,000 sq. ft. industrial complex at Audenshaw in Manchester.

With worldwide turnover reaching \$592M last year and over 20,000 employees worldwide, Brother has gained significant shares of each market in which it competes. It holds around 12% of the world's typewriter market, having supplied over ten million typewriters in the past 20 years.

Brother holds over 5,000 patents in the field of manufacturing technology. These innovations have given the low production costs and high quality on which is based the Brother marketing strategy of aggressively pricing high specification products.

Brother is now focussing its strategy on the office equipment market in the United Kingdom. Throughout 1983 there will be major launches, particularly in the area of compact electronic typewriters, compact daisywheel printers and ancillary products such as cut sheet feeders.

120,000 Clients in 140 countries throughout the world rely on

CHESS, SUTTON COLDFIELD

SUBSCRIBE TO 'CHESS' the monthly with the largest circulation for an independent chess magazine in the world. Send £11.00 and you will receive each month's issue, as it appears, for one year. You can choose between parallel descriptive or algebraic editions. The address Chess, Sutton Coldfield, B73 6AZ is enough.

Chess sets in wood, plastic or ivory — Chess boards in wood, plastic, etc. — Chess trophies in wood, ivory, metal — Plug-in sets for travelling — Chess clocks — Chess-playing micro computers — Score sheets — Score Books or pads — Chess books, English or foreign — Subscription to CHESS or other chess magazines — Rubber stamps for printing chess diagrams; diagram blanks — Chess tuition or adjudication — Search fees for games or chess information — Chess neckties — Cuff-links — Postal Chess requisites — Demonstration boards for lecturing — Display cards (club membership raisers) — Pairing sheets for lightning chess — Swiss tournament pairing cards — Tables inlaid with chess boards — Adjudication sheets — Adjournment envelopes — Magnetic chess sets, Wallet or "Stand up" — Leather wallet sets — Chess cassettes — Chess design crockery — Chess Video tapes — Chess piece printers; letraset for printing chess pieces. Our new Coldfield Clock (£20.48 post free) — the clock of the century — in production again in our even better version.

We organise POSTAL CHESS continuously throughout the year.

Send 40p stamps for illustrated catalogue and specimen magazine to
CHESS, SUTTON COLDFIELD, B73 6AZ, ENGLAND

BRITISH CHESS EDUCATIONAL TRUST

British juniors are among the best in the world. They need training in many ways, from local training tournaments and individual coaching to the opportunity to compete in all kinds of strong international events.

THIS COSTS MONEY!

The BCET is a recognised charitable trust, whose objects are to fulfil the training needs of our junior chess players. Please send us a donation — or better still a deed of covenant, which enables us to spend more than you give!

WRITE TODAY to the Secretary,
British Chess Educational Trust
13 Whitecross Avenue
Whitchurch
Bristol BS14 9HZ

**PHILLIPS & DREW /
GLC KINGS CHESS
TOURNAMENT**

—
Thursday, 26th April
to

Friday, 11th May, 1984

—
County Hall, London
—

This was the World's best chess tournament in 1982. Make a note in your diary now to come and see this premier event.

THE BBC TV WORLD CUP
is to be held in England
in 1983

Eight of the world's best, including World Champion Anatoly Karpov, will compete in the splendour of Bath's Guildhall from 1-10 November (approximate dates).

The public will be admitted to the play!

*Fuller details from BCF
nearer the date.*

—
**A WORLD-CLASS
JUNIOR INTERNATIONAL
INVITATION EVENT**

will be held in
**the East Midlands
from 8-17 April 1984.**

*A full announcement will be made by
the BCF in the autumn.*

Welcome to PLEASURELAND Southport

The Amusement Park on the Sands

—
Open each day from 10 a.m.
—

For Party and Group bookings, and all other
Information: Contact Pat Byrne, Southport 32717

VOUCHER

Pleasureland 1983

Entitles holder to one free ride on either the
Mad Mouse or the Ghost Train.

ONE VOUCHER PER PERSON

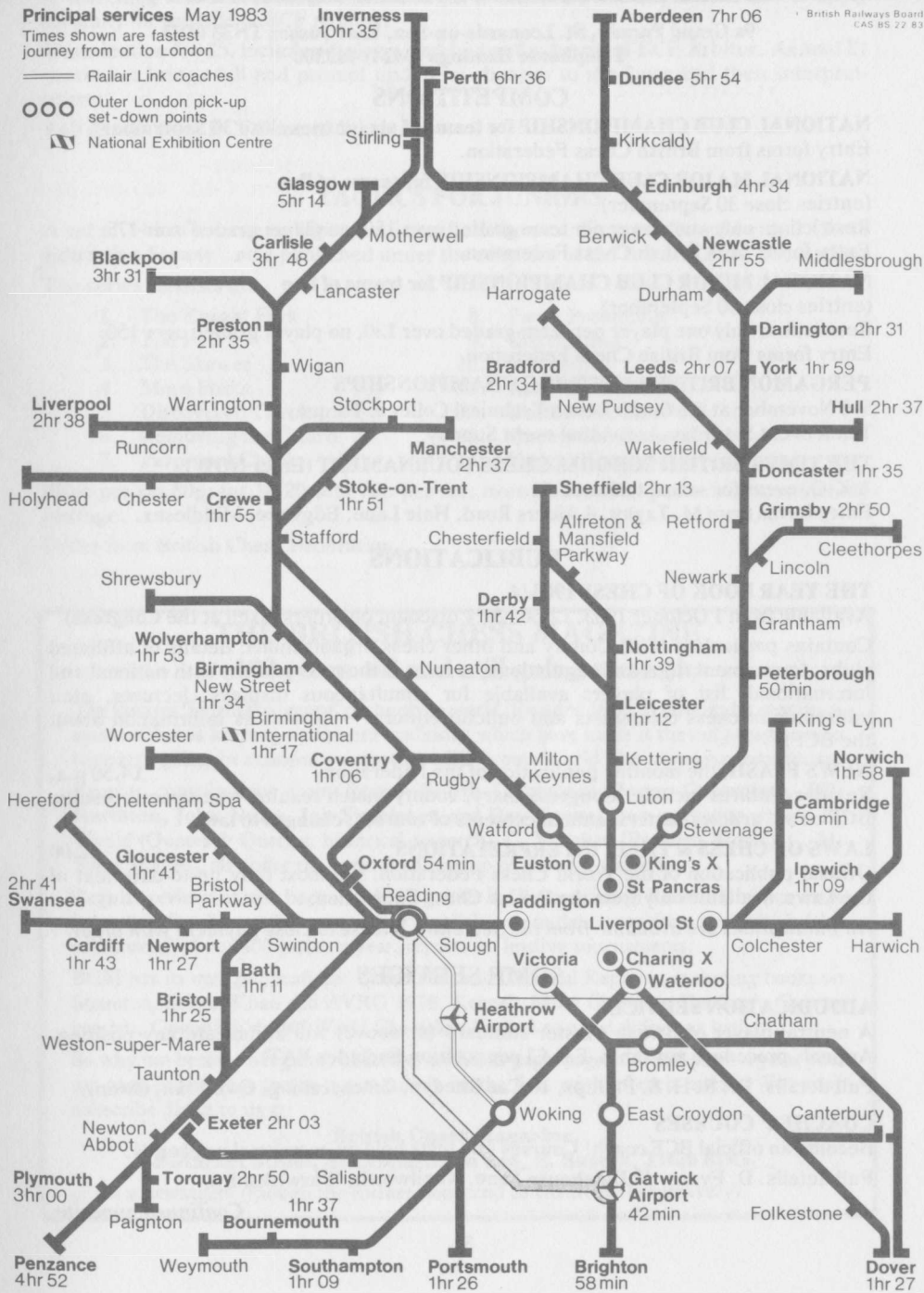
InterCity Services

Principal services May 1983

Times shown are fastest journey from or to London

- Railair Link coaches
- Outer London pick-up set-down points
- ⌘ National Exhibition Centre

British Railways Board
GAS BS 22 83



BRITISH CHESS FEDERATION

9a Grand Parade, St. Leonards-on-Sea, East Sussex TN38 0DD
Telephone: Hastings (0424) 442500

COMPETITIONS

NATIONAL CLUB CHAMPIONSHIP for teams of six (entries close 30 September).
Entry forms from British Chess Federation.

NATIONAL MAJOR CLUB CHAMPIONSHIP for teams of five
(entries close 30 September).

Restriction: only one player per team graded over 150, no player graded over 175.
Entry forms from British Chess Federation.

NATIONAL MINOR CLUB CHAMPIONSHIP for teams of five
(entries close 30 September).

Restriction: only one player per team graded over 130, no player graded over 150.
Entry forms from British Chess Federation.

PERGAMON BRITISH LIGHTNING CHAMPIONSHIPS

5-6 November at the South Devon Technical College, Torquay.
Team event Saturday, Individual event Sunday.

THE TIMES BRITISH SCHOOLS CHESS TOURNAMENT (Enter NOW)

A K.O. event for school teams of six.

Entry forms from M. Taylor, 4 Alders Road, Hale Lane, Edgware, Middlesex.

PUBLICATIONS

THE YEAR BOOK OF CHESS 1983/4

Available from 1 October 1983, £2.50 (20% discount on orders taken at the Congress)
Contains particulars of all County and other chess organisations; details of affiliated clubs; tournament rules and regulations; results of the past season, both national and international; list of players available for simultaneous displays, lectures, etc.; addresses of chess columnists and bulletin editors — as well as information about the BCF.

NEWS FLASH, the monthly publication of the Federation £4.50 p.a.
Regular features include: Congress diary, county match results, tournament results, BCF news, articles, letters, announcements of courses, changes to laws.

LAWS OF CHESS & THEIR INTERPRETATIONS

£2.00
Official publication of the World Chess Federation; the most fully up-to-date text of the Laws, available only from the British Chess Federation.

All publications are available from the Secretary. Please enclose payment with order!

SOME SERVICES

ADJUDICATION SERVICE

A neutral player of British Master standard (or above) will adjudicate any position.
Appeals procedure available. Fee £3 per position (includes VAT).

Full details: Dr. R. H. S. Phillips, 16 Cae Rhedyn, Croesyceiliog, Cwmbran, Gwent.

COACHES' COURSES

Become an official BCF coach! Courses and tests held on occasional weekends.

Full details: D. Evans, 47 Dalehouse Lane, Kenilworth, Warwickshire.

Continued opposite

ARBITER'S EXAMINATION

A searching test of knowledge of the Laws. Successful candidates will be able to apply formally for the title of BCF Arbiter.

Examination fee £5, includes diploma and badge for eventual BCF Arbiter. Annual £1 thereafter brings full and prompt update of changes to the Laws and their interpretations.

Full details from BCF General Secretary.

TACTICS FOR JUNIORS

A set of 14 leaflets exemplifying basic tactical themes. First published by the 'Chess Education Society', now published under the auspices of the British Chess Federation.

The series consists of:

- | | |
|-----------------------|-----------------------|
| 1. The Knight Fork | 8. Pawn Promotion |
| 2. The Pin | 9. Obstruction |
| 3. The Skewer | 10. Trapped |
| 4. More Forks | 11. Rook Checkmates |
| 5. Discovered Check | 12. Bishop Checkmates |
| 6. Removing the Guard | 13. Queen Checkmates |
| 7. Perpetual Check | 14. Knight Checkmates |

Price per set 80p; for 10-20 sets 70p per set; over 20 sets 60p per set. Prices include postage.

Order from British Chess Federation.

THE BRITISH CHESS MAGAZINE

102 years old and still going strong!

The famous 'journal of record' of the chess world, founded 1880, is now under new management but is keeping up the old traditions which have made it the only magazine to have kept going for a continuous century of life, come World War, come economic crisis.

Regular contributions from former British Champions **Harry Golombek**, **Bill Hartston**, **John Nunn**, **Jon Speelman** and **Ray Keene**, from specialist writers K. Whyld (Quotes & Queries, historical research), C. Vaughan (Problem World), C. M. Bent (Studies), all under the general editorship of Bernard Cafferty.

Regular reviews of new books, including titles in German and in Russian (the two main languages for chess publications after English), up-to-date news from the British Isles and abroad, about 400 games a year, reports on leading tournaments.

BCM has its own publications: Quarterlies and Classical Reprints, including books on Staunton, Sultan Khan and AVRO 1938, Keene's *Flank Openings*, Harding's *Counter gambits*, Golombek's *1948 World Championship* and so on. Ask for our list!

So why not become a regular subscriber to the 48-page magazine (560 pages a year, plus xvi-page index) that comes out regularly in the first week of each month? You may subscribe direct to us at:

British Chess Magazine,

9 Market Street, St Leonards on Sea, E. Sussex, TN38 0DG,

or via a newsagent (though the former does tend to ensure earlier delivery).

BRITISH CHESS FEDERATION

Certificates of Merit

Designed to encourage beginners* to improve through study as well as practice, this Scheme provides four classes of certificate:

Preliminary (Class 1) 50p

Examines rules, elementary openings, endings and tactical positions; suitable for players after one season's study (depending on individual circumstances).

Intermediate (Class 2) £1

Similar to the above with further openings, harder positions, etc., and use of the clock; should need another season's study (or less for fast learners).

Higher (Class 3) £1

- (a) A wider knowledge of the openings than in Class 2 and specifically the ability to recognise the Vienna Game, Scotch Game, French Defence, Caro Kann, Pirc, Budapest, Grunfeld, Two Knights Defence, Petrov and Alekhine's Defence.
- (b) Somewhat harder positions to analyse than in Class 2.
- (c) The ability to answer specific questions about the moves of an actual game.
- (d) Simple knowledge of Rook-and Pawn endings.

A candidate should be able to achieve a 70% pass (or better) in this Paper before going on to attempt Class 4 (Advanced).

Advanced (Class 4) £1

Deeper knowledge of the various openings; ability to adjudicate given endings with supporting analysis; knowledge of main variations of certain 'traps'; pawn structures; analysis of a given short game by a famous player.

These Test Papers may be taken at any time of the year. Encourage your juniors to raise their overall standard of play by entering for these Test Papers.

Fuller details and test papers available from: **The Certificate of Merit Scheme Officer,**
c/o **British Chess Federation,**
9a Grand Parade,
St. Leonards-on-Sea,
East Sussex TN38 0DD.

*The tests are not confined to schools, but are also open to youth organisations, public chess clubs, individuals, etc.

LITTLEWOODS STORE CHAPEL ST., SOUTHPORT

Welcomes the 1983 British Chess Championships. Free Beverage with any main meal.

—
Typical saving 17% on proof of participation in Championships.

BRITISH WOMEN'S CHESS ASSOCIATION

AGM

The Annual General Meeting of the B.W.C.A. will be held at the King George V College, Southport, at 10.00 a.m. on Sunday 14 August.

CHESS COMPUTERS

I believe I offer the only Chess Computer Mail Order service which is not committed to any particular make of computer. Accordingly, I can give an unbiased opinion as to which is currently the strongest model, which is the current Best Buy, and can indicate the relative strengths of the machines, based on controlled tests between machines. I can supply you with either the most recommended machines or with any other of your choice.

I can normally supply you at the **LOWEST PRICE**, revising my price very promptly if any competitors reduce theirs.

You can normally phone me personally at any time in the evening or at the weekend (Sundays included).

My assessment of the strongest chess computers at the time of going to press is as follows:—

	Estimated BCF grade:
1. Prestige Challenger (£820)	at least 170
2. Sensory 9 Challenger, plus CB16 Opening cartridge (£221)	155
3. Chess Champion Mark VI (£253)	148
4. Sensory 9 Challenger (basic) (£142)	145
5. Steinitz in Great Game Machine (£245)	140
6. Mephisto IIb (£192 or £435)	140
7. Prodigy Sensory (£115)	138
8. Conchess (£175/£225/£275) (supply uncertain)	130

ALL PRICES INCLUDE V.A.T., POSTAGE, and MAINS ADAPTOR.

Send for a **FREE COPY** of chess computer information and prices, chess supplies price lists (including the Russian Vega chess clock at £14.50) and a **PERSONAL COMPUTER** price list.

Ken Gorman

DOSKA CHESS SUPPLIES

29 FARNHAM WAY, POULTON-LE-FYLDE, LANCS FY6 7TQ Tel. (0253) 899742

SMETHURST'S

of

SOUTHPORT

Welcome all visitors to the Chess Championships and invite them to view their large range of Chess Sets and Games at

3-7WAYFARERS ARCADE
LORD ST., SOUTHPORT
Tel: 32522

—
**10% DISCOUNT ON
PRODUCTION OF THIS
PROGRAMME**

THE RULES OF CHESS

Wallcharts,
attractively illustrated
on heavy art paper
size 30" × 21".

Specially designed as a
teaching aid for beginners.

Price £1.75 each, post paid.
Orders with cheque or P.O.

to:

Tull Publications,
15 Tuesday Market,
King's Lynn, Norfolk.

PRESIDENTS OF THE BRITISH FEDERATION

1904-05 F. G. Naumann, Esq.	1961-64 V. J. R. Soanes, Esq.
1905-20 Sir John O. S. Thursby, Bt.	1964-67 Sir Frederick A. Hoare, Bt.
1921-38 Canon A. G. Gordon Ross, M.A.	1967-70 C. G. Addingley, Esq., Ph.D.
1938-41 The Hon. F. G. Hamilton-Russell	1970-73 P. S. Milner-Barry, Esq., C.B., O.B.E.
1942-50 J. N. Derbyshire, J.P.	1973-76 J. Rushton, Esq.
1950-53 Sir Robert Robinson, O.M., D.Sc., F.R.S.	1976-78 C.E. Williams, Esq.
1953-56 G. S. A. Wheatcroft, Esq.	1978-79 W. A. Cordon, Esq.
1956-59 Sir Leonard S. Swinnerton Dyer, Bt.	1979-82 D. W. Anderton, Esq., O.B.E.
1959-61 Sir Clarence Sadd, C.B.E., J.P.	1982- P. M. Shaw, Esq.

CHAMPIONS OF THE BRITISH CHESS FEDERATION

British Champions

1904 W. E. Napier	1948 R. J. Broadbent
1905 H. E. Atkins	1949 H. Golombek
1906 H. E. Atkins	1950 R. J. Broadbent
1907 H. E. Atkins	1951 E. Klein
1908 H. E. Atkins	1952 R. G. Wade
1909 H. E. Atkins	1953 D. A. Yanofsky
1910 H. E. Atkins	1954 L. W. Barden & A. Phillips
1911 H. E. Atkins	1955 H. Golombek
1912 R. C. Griffith	1956 C. H. O'D. Alexander
1913 F. D. Yates	1957 Dr. S. Fazekas
1914 F. D. Yates	1958 J. Penrose
1915-18 No contest	1959 J. Penrose
1919 No contest	1960 J. Penrose
1920 R. H. V. Scott	1961 J. Penrose
1921 F. D. Yates	1962 J. Penrose
1922 No contest	1963 J. Penrose
1923 Sir George Thomas, Bt.	1964 M. J. Haygarth
1924 H. E. Atkins	1965 P. N. Lee
1925 H. E. Atkins	1966 Dr. J. Penrose
1926 F. D. Yates	1967 Dr. J. Penrose
1927 No contest	1968 Dr. J. Penrose
1928 F. D. Yates	1969 Dr. J. Penrose
1929 Mir Sultan Khan	1970 R. G. Wade
1930 No contest	1971 R. D. Keene
1931 F. D. Yates	1972 B. R. Eley
1932 Mir Sultan Khan	1973 W. R. Hartston
1933 Mir Sultan Khan	1974 G. S. Botterill
1934 Sir George Thomas, Bt.	1975 W. R. Hartston
1935 W. Winter	1976 A. J. Mestel
1936 W. Winter	1977 G. S. Botterill
1937 W. A. Fairhurst	1978 J. S. Speelman
1938 C. H. O'D. Alexander	1979 R. Bellin
1939 No contest	1980 Dr. J. D. M. Nunn
1940-45 No contest	1981 P. E. Littlewood
1946 R. F. Combe	1982 A. J. Miles
1947 H. Golombek	

British Lady Champions

1904 Miss K. B. Finn	1949 Miss E. Tranmer
1905 Miss K. B. Finn	1950 Mrs. R. M. Bruce
1906 Mrs. Herring	1951 Mrs. R. M. Bruce
1907 Mrs. Herring	1952 No contest
1908 Mrs. A. L. Curling	1953 Miss E. Tranmer
1909 Mrs. D. L. Anderson	1954 Mrs. R. M. Bruce
1910 Mrs. Houlding	1955 Miss J. F. Doulton & Mrs. R. M. Bruce
1911 Mrs. Houlding	1956 Mrs. E. Pritchard
1912 Mrs. D. L. Anderson	1957 Capt. P. A. Sunnucks
1913 Mrs. Mosley	1958 Capt. P. A. Sunnucks
1914 Mrs. Houlding	1959 Mrs. R. M. Bruce
1915-18 No contest	1960 Mrs. R. M. Bruce
1919 Mrs. S. Holloway	1961 Miss E. Tranmer
1920 Mrs. A. Stevenson	1962 Mrs. R. M. Bruce
1921 Mrs. D. L. Anderson	1963 Mrs. R. M. Bruce
1922 Miss E. C. Price	1964 Capt. P. A. Sunnucks
1923 Miss E. C. Price	1965 Mrs. E. Pritchard
1924 Miss E. C. Price	1966 Mrs. M. E. E. Clarke & Miss G. Moore
1925 Mrs. A. Stevenson	1967 Mrs. R. M. Bruce & Miss D. Dobson
1926 Mrs. A. Stevenson	(Mrs. Wright)
1927 No contest	1968 Miss D. Dobson
1928 Miss E. C. Price	1969 Mrs. R. M. Bruce & Miss D. Dobson
1929 Miss D. M. Gilchrist	1970 Mrs. J. Hartston
1930 Mrs. A. Stevenson	(Dr. Miles)
1931 Mrs. R. P. Mitchell & Mrs. T. Wheelwright	1971 Mrs. J. Hartston
1932 Mrs. R. P. Michell	1972 Mrs. J. Hartston
1933 Mrs. Fatima	1973 Mrs. J. Hartston
1934 Miss D. M. Gilchrist	1974 Mrs. J. Hartston
1935 Mrs. R. P. Michell	1975 Ms. S. Jackson
1936 Mrs. S. J. Holloway	1976 Dr. J. Hartston
1937 Miss R. M. Dew (Mrs. Bruce)	1977 Dr. J. Hartston
1938 Miss Musgrave	1978 Ms. S. Jackson
1939 Miss E. Saunders (Mrs. Pritchard)	1979 Dr. J. Miles
1940-45 No contest	1980 Ms. S. Jackson
1946 Miss E. Saunders	1981 Ms. S. Jackson
1947 Miss E. Tranmer	1982 Ms. J. Garwell
1948 Miss E. C. Price	